



Premium Traffic Control Solutions

P 253.531.9782 E estimating@advancedgovernmentservices.com
advancedgovernmentservices.com

AGS



Safety is what we do

AGS offers traffic control services, planning and management, signage, and equipment rentals to municipal, public works, and private roadway project contractors. We provide a wide range of traffic equipment needed for roadway, highway, freeway, arterial, and bridge construction and have everything you need to stop, redirect and move traffic safely.

This specialized solutions booklet outlines some of the products and services designed to keep your project running smoothly. This ensures that you are maximizing productivity whilst adhering to a cost-effective budget.

Your Trusted Work Zone Team

From municipalities, State and Federal public works, to private labor projects, our clients rely on us for dependable traffic control and road safety services. AGS has partnered with ATS Traffic to design and deliver scalable work zone solutions that meet and exceed specifications while also setting a new standard in service.

AGS delivers streamlined services that are fully customizable and scalable to suit your project. We have extensive experience in temporary traffic control management services for various large-scale projects and events across the Pacific Northwest.

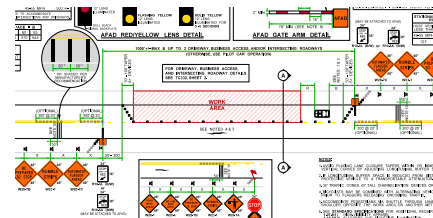
AGS



TRAFFIC CONTROL SERVICES

TRAFFIC MANAGEMENT PLANS

Our dedicated team of industry-leading experts create detailed, site-specific traffic plans that will lead to streamlined project management and get you on the road working faster.



ON-CALL SERVICES

Our On-Call Traffic Services team is here for you anytime, anywhere. We are on call, 7 days a week, 24 hours a day. Emergencies happen, and our Traffic Safety Experts are professionally certified in traffic control and management.



FLAGGING

All AGS employees are State Certified in Traffic Control Management. Construction flagging plays a vital role in managing traffic flow and protecting workers on a roadway for the duration of a construction project.



SMALL TO LARGE PROJECT CLOSURES

Our crews handle every area of service for large scale projects applicable to highways, freeways, and more. We can control the flow of traffic with our reliable solutions, which include the deployment of fully equipped TMA trucks, message and arrow boards, and other traffic control devices. Every component, from sales and rentals to labor and traffic movement, is managed in-house by our well-trained, dedicated teams.



MAINTENANCE

We maintain every piece of equipment we sell or install, and depending on your location and the damage, we can usually do it on-site.



PROGRAMS

AGS is proud to provide premium traffic safety solutions and top-of-the-line traffic control equipment at exclusive rates. We have programs available to both private and public organizations that streamline procurement and reduce deployment times.





TRAFFIC SIGNS

Through the partnership between AGS and ATS Traffic, we use only the best raw materials to provide our customers with high quality finished products, whilst reducing waste. Unlike many of our competitors, we go over and above 3M certified standards. This involves an extensive, acid etching process that ensures proper adhesion of reflective materials for the highest standard and maximum durability.

State-of-the-art production printers and equipment are integrated with our advance workflow, proven to improve efficiency and the customer experience. Our quality management applications enable us to enforce a lean process for order fulfilment and delivery. Our durable, warranty-protected sign products are proven to withstand harsh weather conditions.

AGS provides:

- Regulatory & Parking Signs
- Construction & Warning Signs
- Information & Guide Signs
- Specialty & Custom Signs
- Street Name Blades & Rural Address Signs
- Bases, Mounts, Posts, Hardware & Inserts





3M™ STAMARK™ REMOVABLE TAPES

All work zones, all weather—all the way home safely.

Work zones don't have to be danger zones. You can help improve safety with removable tape solutions from 3M.

Create temporary work zone lanes that perform like permanent all weather pavement markings to help keep traffic moving safely—especially in wet weather.

- Exceptional durability—microcrystalline ceramic beads ensure long-lasting visibility
- Fast and easy to apply and remove without grinding
- Available in white (710), yellow (711), and black line mask (715)
- Superior adhesion and conformability—adheres to a wide range of road surfaces





EQUIPMENT RENTALS & SALES

We offer daily, weekly, and monthly rates. Equipment may be picked up at our facility, or we can have the equipment delivered directly to your project. We carry only the highest-quality traffic safety products. Choose the work zone solutions you need to get the job done right — from planning and design, to delivery and setup.

DRUMS, CONES & DELINEATION



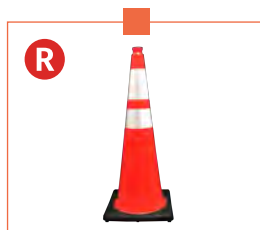
**WatchTower
Delineator**



**Commander
Traffic Drum**



Candle Delineator



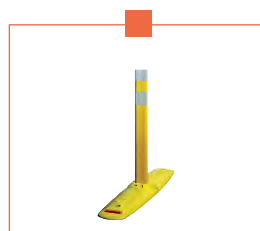
**Recessed Collar
Cones**



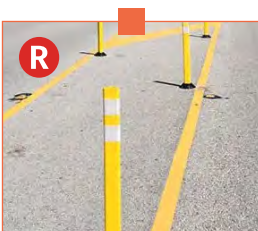
**Standard PVC Traffic
Cones**



Grabber Cones



**FG 300 Turnpike
Grade Curb System**



**FG 300 Tubular
Marker**



**Opposing Lane
Traffic Divider**

R All products marked with the "R" label are also available for rent.

BARRICADES

R

✓ MASH APPROVED



Type II Barricade

R

✓ MASH APPROVED



Type III Barricade

R



NARROWCADE

R

✓ MASH APPROVED



ADA Pathcade Barricade System

R



A-Frame Barricade

R

✓ MASH APPROVED



Safetycade Collapsible Barricade

R All products marked with the "R" label are also available for rent.

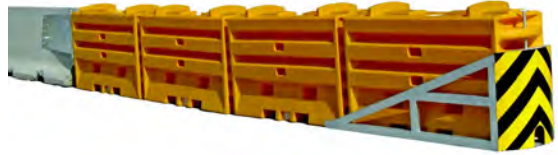
WATER-FILLED BARRIER & END TREATMENT

R



Water-Wall™ Water-Filled Barrier

R



SLED Waterfilled End Treatment

SPEED BUMPS

R



Speed Bump

R



Speed Humps

R



RoadQuake 2F Rumble Strips

R



RoadQuake Rumble Strip CRIB

R All products marked with the "R" label are also available for rent.

MESSAGE BOARDS

R



PCMS-320 Pro Series Full Matrix
(Mid-Size)

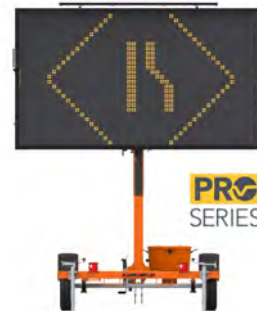


PCMS-548 Pro Series Full Matrix
Solar-Powered Portable Message Board



PCMS-1210 Pro Series 3 Line
Solar-Powered Portable Message Board

R



PCMS-1500 Pro Series Full Matrix
Solar-Powered Portable Message Board



TM-548 Full Matrix
Vehicle-Mounted Message Board



Full Matrix Vehicle-Mounted
Message Board
For TA-3812 Scorpion II Trailer

R All products marked with the "R" label are also available for rent.

ARROW BOARDS & LIGHTS



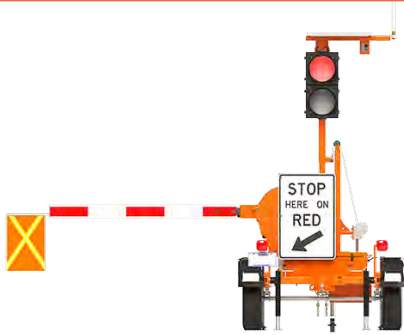
TLD-2312 Solar-Powered
Mid-Size Trailer-Mounted Traffic Lights

R



Smart Arrowboard
Connected Trailer-Mounted Arrowboard

R



Flagger Mac
Automated Flagger Assistance Device (AFAD)



VM-367225
Vehicle-Mounted Arrowboard

PORTABLE RADAR SPEED SIGN

R



SP-710 Pro Series
Trailer-mounted Speed Sign

R All products marked with the "R" label are also available for rent.

LIGHT TOWERS AND CAMERA TRAILERS



PTL-1000
Trolley-Mounted Light Tower



PPL-1000
Trolley-Mounted Light Tower



PSLT-4000S
Trailer-Mounted Light Tower



PSLT-6000
Trailer-Mounted Light Tower



WZMC-1000
Work Zone Management Camera System



CT-2430
Trailer-Mounted Camera

R All products marked with the “R” label are also available for rent.

SMART WORK ZONE SENSORS



CT-2020-MW
Trailer-Mounted Microwave Sensor



Speed-Mac VP
Portable Sensor with Vertical Solar Panel



Smart Work Zone Leaders for 10+ Years

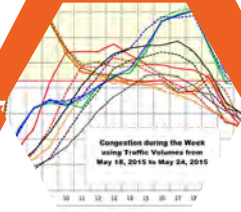
Improve the safety and mobility of work zone by utilizing web-based software to manage equipment remotely, unlock new data insights and leverage automation to scale custom systems.



**Queue
Detection**



**Fleet
Management**



**Live Data &
Reports**



**Training &
Support**



**Repairs &
Parts**

Smart Work Zones

Portable Traffic Management Systems put the smart in Smart Work Zones. Combining rigorous hardware and software applications, we offer real-time project access and control via the web. From variable speed limit signs to traveler information systems, our flexible technology solutions help you improve safety and mobility.

Traffic Responsive Systems: Continuously monitor real-time traffic conditions and respond with appropriate messaging such as driving instructions or commands and traffic condition information. These systems are designed to meet traffic control and traveler information needs.

Vehicle Responsive Systems: Evaluate individual vehicle characteristics and behavior to automatically produce warnings directed at those individual vehicles.

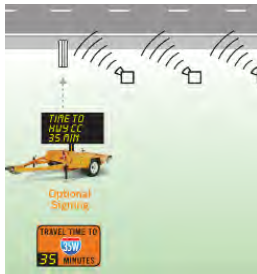
Condition Responsive Systems: Are programmed to identify real-time, atypical roadway conditions and provide motorist guidance, especially for hazardous or unique roadway and weather conditions.



Hazardous Roadway Warnings caution motorists of dangerous or unexpected roadway conditions. Weather-related information and incidents requiring changes in driver behavior (e.g., a blocked lane) are common warning scenarios.



Truck Entry Warnings are useful in temporary traffic control applications in which trucks must use the mainline roadway. When trucks are unable to accelerate, decelerate, or cross the roadway without necessitating changes in driver behavior, such as lane or speed changes, this system provides alerts to drivers.



Travel Time Information systems provide continuously updated, current travel time between the driver's location and a specific destination downstream. This system gives motorists information in advance of a decision point and provides route choices that smooth traffic flow.



Dynamic Speed Displays indicate the posted speed limit to each passing driver along with that driver's current speed, especially valuable when workers are adjacent to the open lane of traffic or when roadway conditions are especially hazardous.

ROAD USER BENEFITS:

- Increase traffic capacity
- Improve work zone safety through decreased speeds in work zones
- Reduce delays that come from diminished capacity and speed
- Increase driver awareness
- Reduce travel times: drivers change their routes when they are provided accurate travel time, delay time, or alternate route messaging
- Decrease primary and secondary incidents
- Create more uniform speeds
- Reduce road rage



Questions about your upcoming project?

AGS and ATS Traffic can provide you with recommendations and customized solutions for your work zone needs

JAMLOGIC

WHY USE JAMLOGIC IN SMART WORK ZONES?

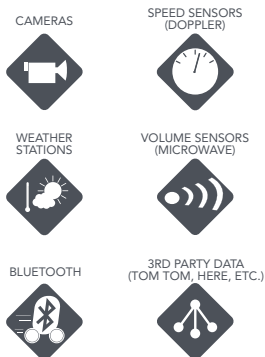
Smart Work Zones (SWZ) improve safety and mobility and save lives by providing useful driver information, improving traffic flow and reducing incidents. Data demonstrates that in the past several years, Smart Work Zones, along with other safety initiatives, have reduced fatalities in US work zones nearly 30%. Ver-Mac manufactures the equipment, developed the JamLogic software and provides the expertise to make work zones smarter.

JAMLOGIC SOFTWARE

JamLogic software provides transparent web-based access to all devices and data. The software analyzes traffic data and provides real-time information to the motoring public, project managers, agency traffic management centers (TMC) and public websites. Ver-Mac can provide the right technology and application to make your work zone smart.

- Queue detection and warning
- Work zone travel time / alternate route
- Dynamic speed advisory
- Weather condition alerts
- Custom applications

RAW DATA INPUT



REAL-TIME INFO OUTPUT



STEP 1

JamLogic software wirelessly collects data via high-speed modems from a variety of field sensing devices and/or third-party traffic flow data.

STEP 2

JamLogic server analyzes the data based on algorithms. The logic and messages are predetermined by the project engineer and/or agency.

STEP 3

JamLogic automates the messages and provides real-time information to the motoring public. Project managers, agency TMC and public websites. Project managers and DOT representatives can be provided with email or text alerts of incidents.

FEATURES

- Scalable, flexible and customizable system
- Speed data from multiple sources
- Interactive GPS device mapping and listings
- Transparent logging and history data
- Streaming video with PTZ control
- Unlimited users / various levels of access
- Optional public website
- Optional automated email or text alerts

BENEFITS

- Increased traveler and worker safety
- Cost savings due to reduced incidents
- Better information to motoring public
- Quicker incident response and improved mobility
- Real-time project visibility
- Data analysis at your fingertips
- Better understanding of traffic conditions
- Meets the requirements in the FHWA's Section 1201 Final Rule



NOTES

This image shows a single sheet of white paper with horizontal orange ruling lines. The lines are evenly spaced and run across the width of the page. There are no margins, text, or other markings on the paper.



COMMITTED TO SAFETY. FOCUSED ON YOUR NEEDS.

CONTACT AGS TODAY

Location: 8644 Pacific Avenue, Tacoma, Washington 98444

Phone: 253.531.9782

Email: estimating@advancedgovernmentservices.com

Website: advancedgovernmentservices.com